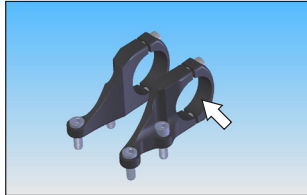
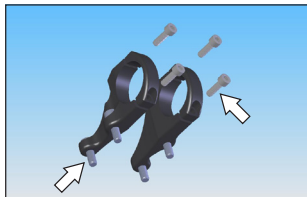


**1**



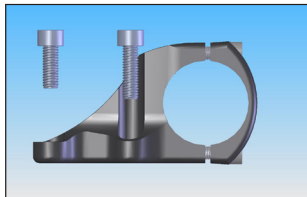
Degrease clamp mounting areas on stem with rubbing alcohol. Degrease handlebar at contact areas. Failure to do this can result in handlebar slipping.

**2**



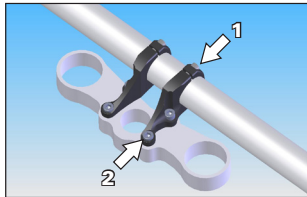
Grease all stem and mounting hardware.

**3**



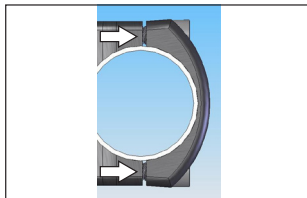
Be sure to install the longer M6X20mm bolts at the front (closest to the handlebar) location, and install the shorter M6X16mm bolts at the back location. If installing a limited edition stem, all 4 bolts are the same length

**4**



Must use torque wrench for assembly. Improper torque can result in stem failure. Torque handlebar clamp hardware to 4.5N-m (40 in-lbs). Torque crown mounting hardware to 10.0N-m (89 in-lbs). Alternate tightening of hardware until torque specs are met. First Torque handlebar clamp hardware, then torque crown mounting hardware.

**5**



Be sure that there is an equal gap on the top and bottom of stem clamps. Be sure to check hardware torque before every ride. Conduct a visual inspection of stem for cracks before riding. If imperfections are noticed, DO NOT RIDE stem and contact Point One Racing. If you require further assistance, please contact us at [info@pointoneracing.com](mailto:info@pointoneracing.com).